

# RS300/400/500 Series

## Outline

Our RS series embody the manufacturing history of our company. All series are sturdy and solid with high dependability designed for control units of plants, installations, audio equipments, etc.

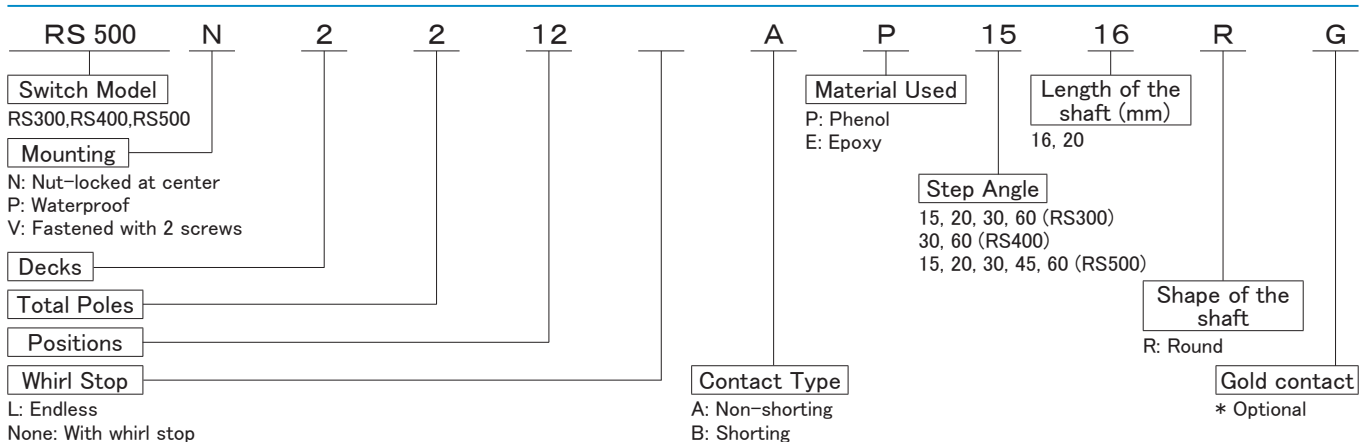
## Features

- Free to change the number of switch positions by replacing self-tapping screws
- Various combinations of double shafted model available
- RoHS compliant

## Specifications

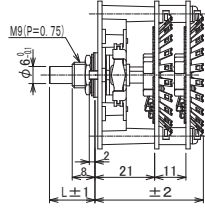
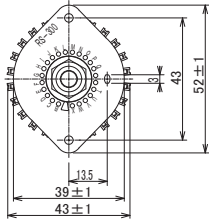
	RS300	RS400	RS500	
Step Angles	15/20/30/60	30/60	15/20/30/45/60	
Switching Mechanism	15/20: Shorting 30/60: Non-shorting	Shorting and Non-shorting selectable	15/20: Shorting 30/45/60: Non-shorting	
Water Proofing	-----	Adapter panel and rubber o-rings provided at requests		
Gold Contacts	Available			
High-Voltage Withstanding	Available (Up to 6,000V)	-----		
Operating Temperature	-20°C +70°C			
Storage Temperature	-40°C +C70°C			
Rotational Torque	0.12N · m ~ 0.35N · m	0.10N · m ~ 0.25N · m		
Terminal Strength	10N			
Nut Tightening Torque	2N · m			
Vibration Resistance	10Hz ~ 55Hz ~ 10Hz/min (vibrated for 1.5mm to each XYZ direction) No defect found under conditions above			
Heat Resistance of Solder	350±10°C , 3 seconds ±1			
Contact Resistance	(1kHz±200Hz of voltage 20mV, 50mA or less)			
	5mΩ max.	15mΩ max.	10mΩ max.	
Insulation Resistance	After 1 min. of 500VDC Phenol 1,000MΩ ≤ Epoxy 50,000MΩ ≤			
Withstanding Voltage	1,000VAC 1min.	500VAC 1min.		
Rated Value	AC	30V 3.0A/200V 0.5A	30V 1.0A/200V 0.2A	30V 1.5A/200V 0.2A
	DC	20V 3.0A/200V 0.2A	20V 1.0A/200V 0.1A	20V 1.5A/200V 0.1A
Durability	at least 50,000 strokes			

## Part Number Designation



## RS300\_Dimensions (mm)

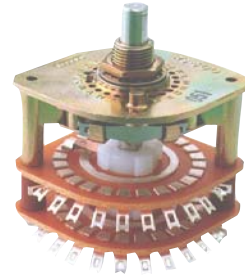
### Bushing



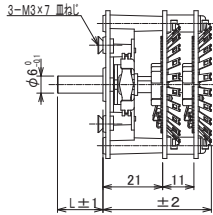
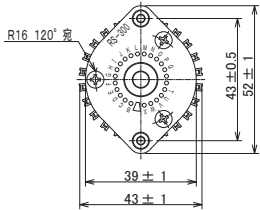
### Panel Mounting Hole Dimensions (mm)



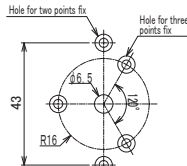
RS300/400/500N accessories  
M9 Nut (t=2mm)  
M9 Toothed lock washer (t=1mm)  
Washer (t=0.5mm)



### Two screws fix



### Panel Mounting Hole Dimensions (mm)



RS300V accessory  
Three M3x7 screws  
(for two points fix, with two screws)

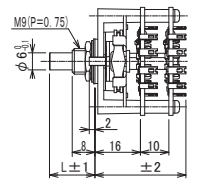
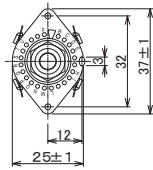
### Length (mm)

L	Standard shaft length		
	16	18	20

Number of Layers (mm)	1	2	3	4
	27	38	49	60

## RS400\_Dimensions (mm)

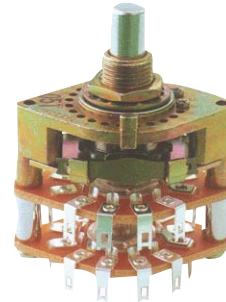
### Bushing



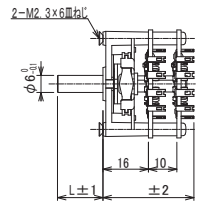
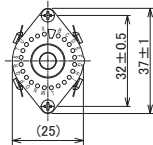
### Panel Mounting Hole Dimensions (mm)



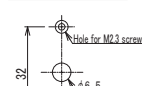
\*φ3.2hole not needed for waterproof  
RS300/400/500N accessories  
M9 Nut (t=2mm)  
M9 Toothed lock washer (t=1mm)  
Washer (t=0.5mm)



### Two screws fix



### Panel Mounting Hole Dimensions (mm)



RS400V accessory  
Two M2.3x6 screw

### Length (mm)

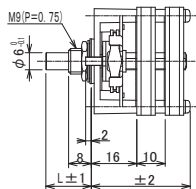
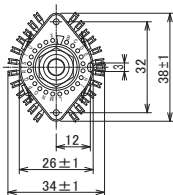
L	Standard shaft length		
	16	18	20

Number of Layers (mm)	1	2	3	4
	22(26)	32(41)	42(56)	52(71)

( ) : for all contacts type

## RS500\_Dimensions (mm)

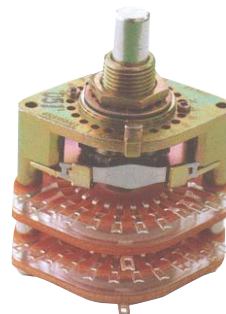
### Bushing



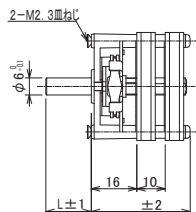
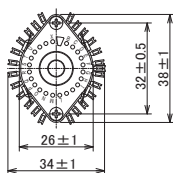
### Panel Mounting Hole Dimensions (mm)



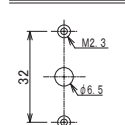
\*φ3.2hole not needed for waterproof  
RS300/400/500N accessories  
M9 Nut (t=2mm)  
M9 Toothed lock washer (t=1mm)  
Washer (t=0.5mm)



### Two screws fix



### Panel Mounting Hole Dimensions (mm)



RS500V accessory  
Two M2.3x6 screw

### Length (mm)

L	Standard shaft length		
	16	18	20

Number of Layers (mm)	1	2	3	4
	26	36	46	56