

Electromagnetic Pump

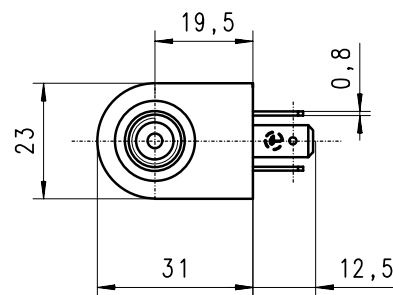
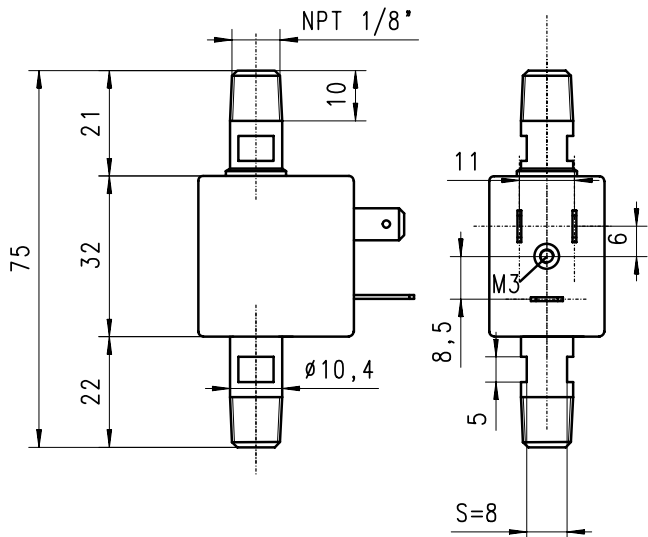
EME

2V

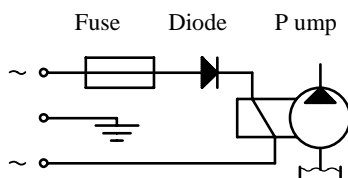
08

Technical data

Maximum pressure	0.8 bar
Maximum flow rate	9 l/h
Maximum suction height	1.5 m
Viscosity range	1...600 mm ² /s
Filter	Mesh 100 µm
Tension	230V~ (110V, 24V,12V)
Frequency	50 Hz, (60 Hz)
Electrical connection	3x 6.35/0.8 (NF.EN 61210)
Power	18 W
Operating factor	100% ED / 20°C
Weight	95 g
Temperature	1°...50°C



Fuse and diode are necessary

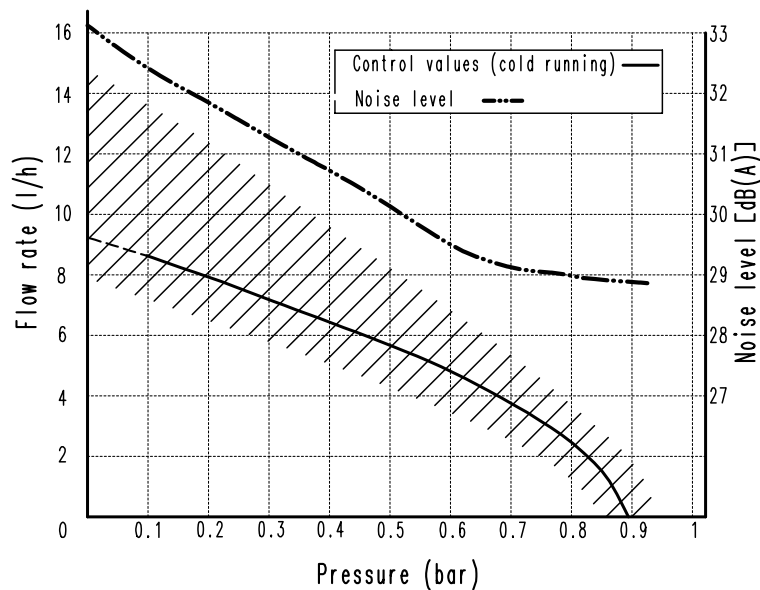


The given specifications have been measured under those conditions :

- stabilised electrical alimentation at 230V
- water at 20°C
- suction height : 1 meter
- without drop in
- cold pump.

The noise level has been measured at 1 meter.

Gotec is pleased to answer to any question that arise or to come up to any of your special application.



Gotec RESERVES THE RIGHT TO MODIFY ITS PRODUCTS AT ANY TIME AND WITHOUT NOTICE.

GOTEC SA RUE DES CASERNES 59 CH-1950 SION (VS) SUISSE
Tel. ..41-27-205 72 05 Fax ..41-27-205 72 06