
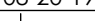
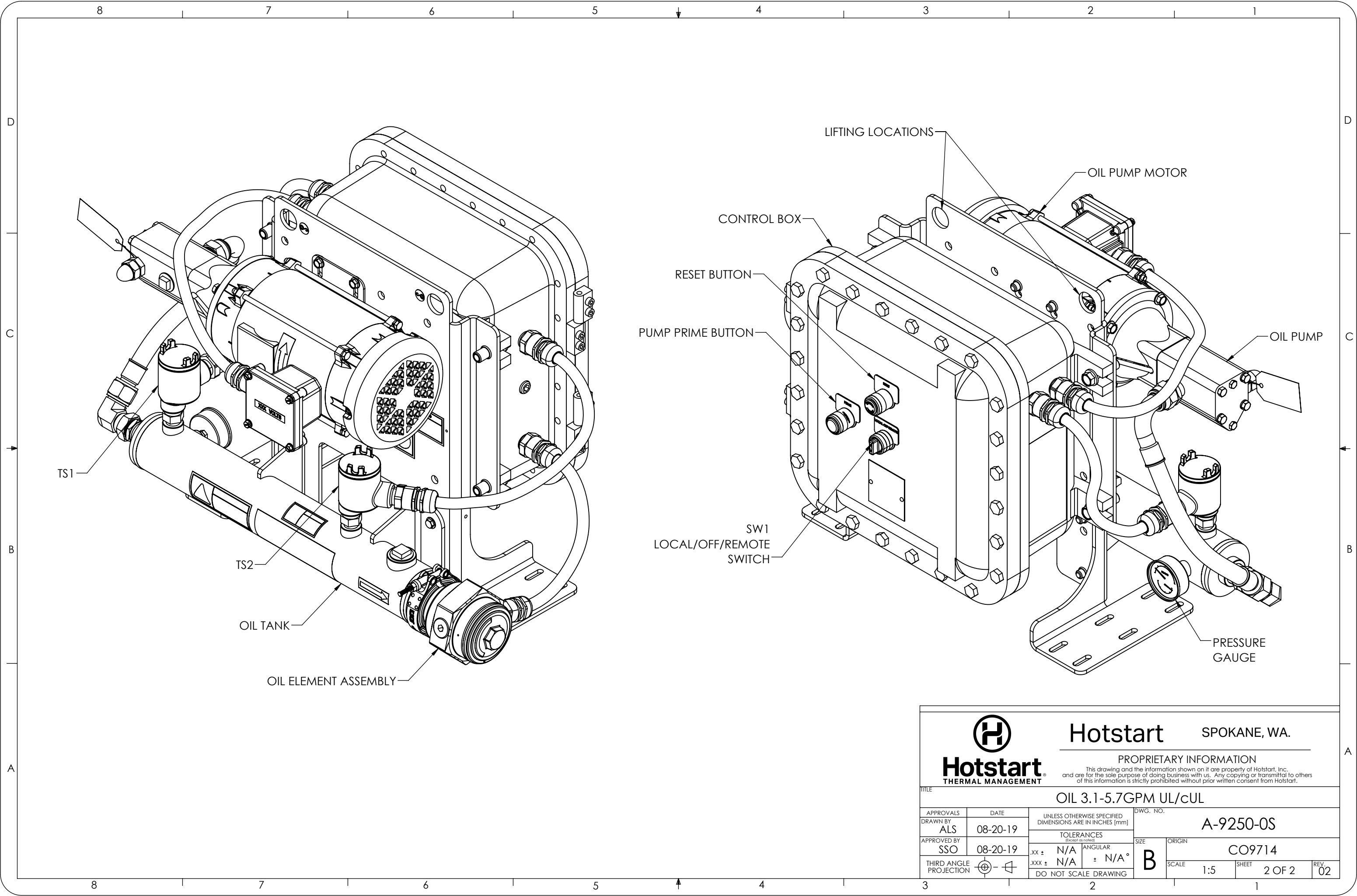



REVISIONS						
REV.	ECO	DATE	DESCRIPTION	AUTH.	DR.	ZONE
1	9714	08/20/2019	INITIAL RELEASE	SSO	ALS	
2	9685	03/31/2020	ADDED UL LABELS	BJH	DG	C2

- NOTES:
1. REFERENCE SYSTEM MODEL AND SERIAL NUMBER WHEN ORDERING REPLACEMENT PARTS.
 2. FOR CONTROL BOX REF DWG# A-9154-2S, FOR WIRING SCHEMATIC REF DWG# A-9250-3.
 3. LOCAL/OFF/REMOTE SWITCH OPERATION:
LOCAL POSITION-SYSTEM ON
OFF POSITION-SYSTEM OFF
REMOTE POSITION-AUTOMATIC OPERATION VIA CUSTOMER SIGNAL
 4. RESET BUTTON USED TO RESET MOTOR PROTECTIVE SWITCH.
 5. ALL DIMENSIONS ARE FOR REFERENCE ONLY.
 6. PRIME BUTTON USED FOR START UP AND WHEN FLUID IS REFILLED TO MAKE SURE FLUID IS CIRCULATING THROUGH THE SYSTEM.
 7. XXXXX-X REPRESENTS WATTAGE AND VOLTAGE COMBINATIONS & MOTOR.

		<h1>Hotstart</h1>		<h2>SPOKANE, WA.</h2>	
<div>PROPRIETARY INFORMATION</div> <p>This drawing and the information shown on it are property of Hotstart, Inc. and are for the sole purpose of doing business with us. Any copying or transmittal to others of this information is strictly prohibited without prior written consent from Hotstart.</p>					
TITLE					
OIL 3.1-5.7GPM UL/CUL					
APPROVALS		DATE		DWG. NO.	
DRAWN BY		ALS		A-9250-0S	
APPROVED BY		SSO		CO9714	
THIRD ANGLE PROJECTION				SCALE	
				1:7	
				SHEET	
				1 OF 2	
				REV. 02	



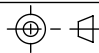


Hotstart
THERMAL MANAGEMENT

Hotstart
SPOKANE, WA.

PROPRIETARY INFORMATION
This drawing and the information shown on it are property of Hotstart, Inc. and are for the sole purpose of doing business with us. Any copying or transmittal to others of this information is strictly prohibited without prior written consent from Hotstart.

TITLE
OIL 3.1-5.7GPM UL/cUL

APPROVALS	DATE
DRAWN BY ALS	08-20-19
APPROVED BY SSO	08-20-19
THIRD ANGLE PROJECTION	

UNLESS OTHERWISE SPECIFIED
DIMENSIONS ARE IN INCHES [mm]

TOLERANCES
(Except as noted)

.XX ±	N/A	ANGULAR ± N/A°
.XXX ±	N/A	

DO NOT SCALE DRAWING

DWG. NO.
A-9250-OS

SIZE
B

ORIGIN
CO9714

SCALE
1:5

SHEET
2 OF 2

REV.
02